

## **“CamBackPro” family of Camera Fiber Optical Transmission System.**

### **Power supply system with redundancy.**

**“CamBackPro” family modules** may be powered-up with the following:

- An external PSU 12V DC@ 1A adapter (1.5A for some modifications) included in the kit
- **PBX-PMX0114** - an external PSU module, 12V DC@ 5A, capable to provide power for up to 8 Base Station functional modules

#### **Providing the redundancy**

The main and the stand-by PBX-PMX0114 power supply units are to be connected to the power distribution module - the PBX-DP-8.

If either of the PSUs fails – an automatic changeover takes place.

- **PBX-PMX0114 power supply unit**

- Mains input... 110..242VAC

- Output .... 12V@ 5A DC

The PBX-PMX0114 power supply units are connected to the PBX-DP-8 power distribution module by the **DB9M-DB9M-0.5** cables.

Two such cables are included in the PBX-DP-8 kit.

- **PBX-DP-8 the eight-port power distribution module**

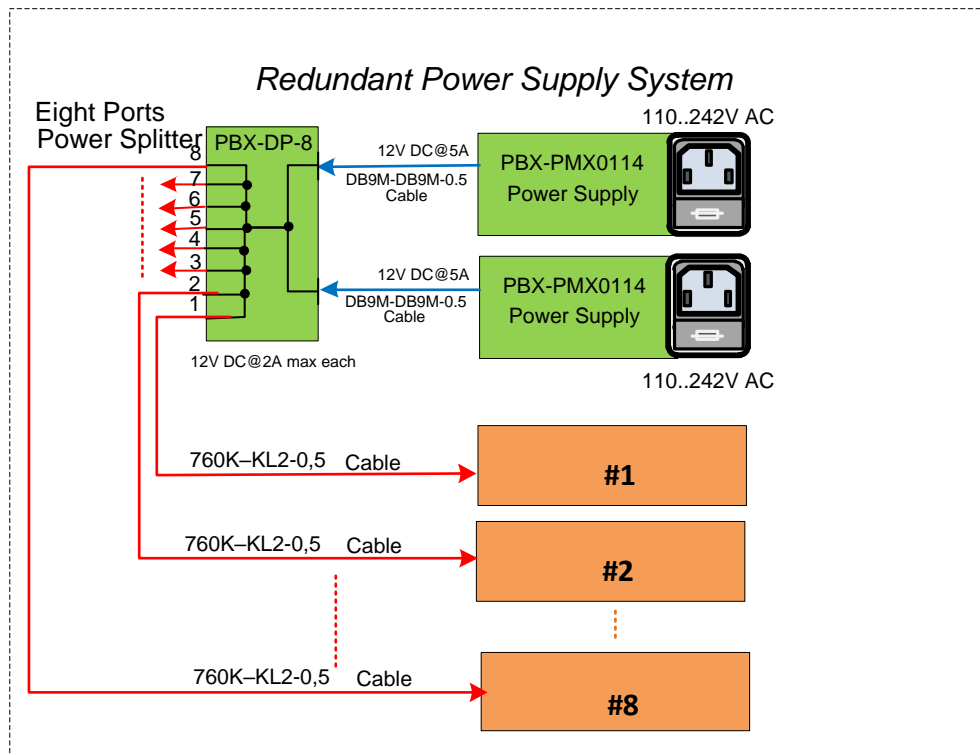
- Input... 12..17V DC

- Outputs ..... 8 ports with 12V...17V DC @ 2A per port maximum.

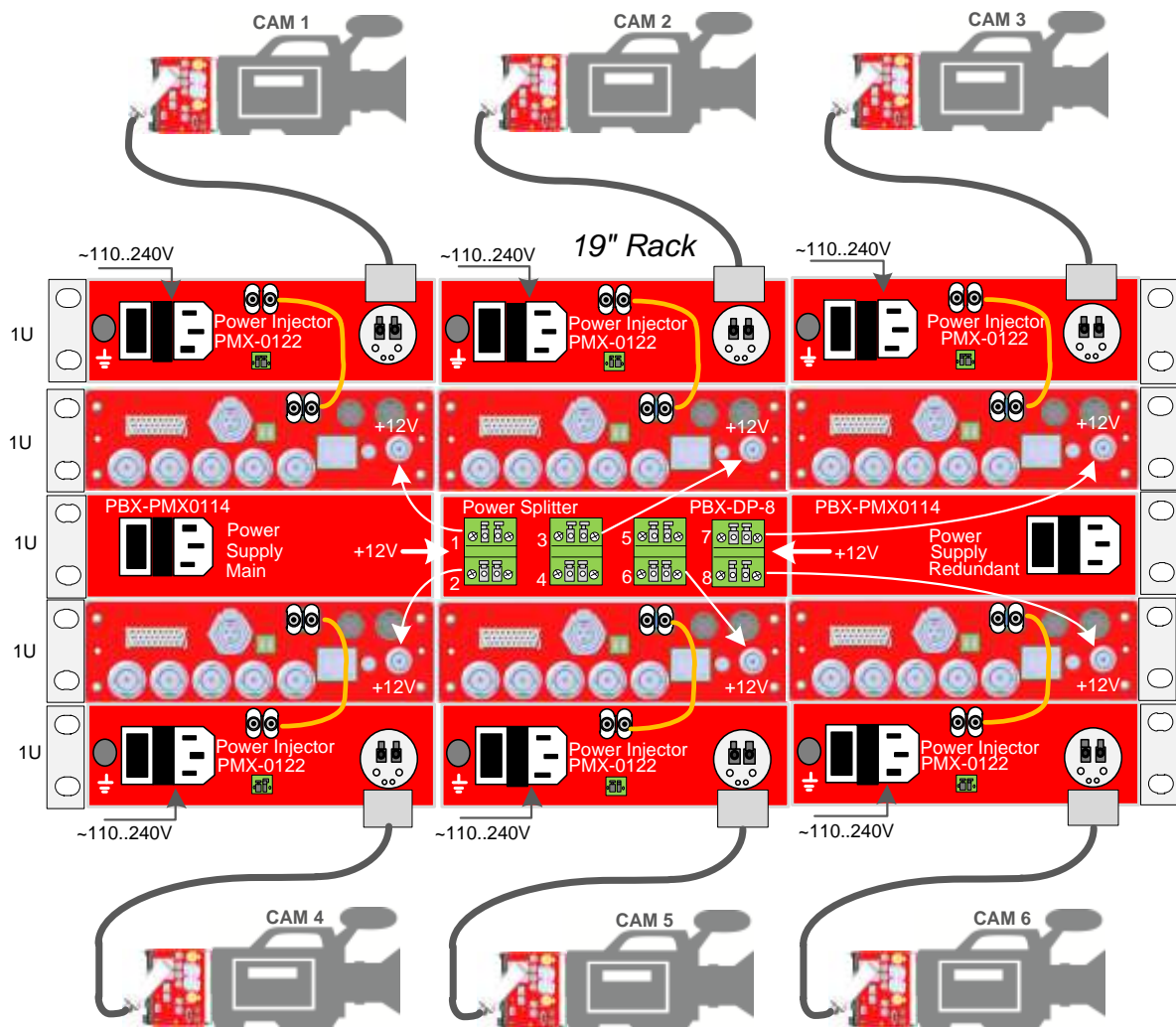
The PBX-DP-8 power distribution module provides +12 volts (redundancy-protected) at its' 8 ports.

Each port connects to the load's POWER DC IN socket by the **760K-KL2-0.5** cable.

Cable to be ordered according with the number of loads.



Power supply system with redundancy.



- An example of six rack-mounted **CamBackPro** PFB-022 Base Station Processors powered-up from redundant PBX-PMX-0114 PSUs via a PBX-DP-8 power distribution module.
- PMX-0122 Power Injector must have 110~240VAC mains feed to power-up a remote camera via a hybrid cable.
- PMX-0122 Power Injector is not required if a remote camera is powered from its' local power source.